

The Adler Center for Caring

on the Van Metre Campus for Hospice Care



A blueprint for
compassion...



The Community Campaign



Dee and Beau Van Metre

DEE AND BEAU VAN METRE — CAPITAL CAMPAIGN CHAIRS

Dear Friends:

Our family has a long tradition of giving back to the community. While there are many worthwhile organizations that we have supported over the years, the special relationship we have with Capital Hospice is one that gives us the greatest understanding of true dedication and compassion.

Capital Hospice is the largest nonprofit hospice in the region and, for over thirty years, has provided comfort and expert care to families and patients who face serious progressive illness. Their experienced and compassionate staff was an incredible help to our family during the challenging times when Dad was in their care.

While the vast majority of Capital Hospice patients receive care wherever they call home, there may be a time when a short-term stay at an inpatient care facility is required. The construction of a much needed hospice care center will help us improve the drastic shortage of inpatient hospice beds in our community.

Because of our deep appreciation for the work they do, the Van Metre Companies contributed the land upon which the Capital Hospice inpatient care center will be built. A cornerstone gift to name the facility has been provided by benefactor and supporter Len Adler. Your support, too, will make a difference in the lives of thousands of families and their loved ones throughout the region.

Dee and I are humbled and honored to serve as Chairs for the Building Hope – Care Beyond Cure Campaign. We invite you to join us in helping Capital Hospice continue to serve the needs of the community. With your help, the Adler Center for Caring on the Van Metre Campus for Hospice Care will become a reality. Please give generously to this wonderful project.

Sincerely,

Dee & Beau

Dee and Beau Van Metre
Campaign Chairs



*Albert G. Van Metre, Sr.
(1926-2008)
Founder Van Metre Cos.*

A PERSONAL APPEAL FROM MALENE DAVIS, PRESIDENT & CEO

For more than 30 years, Capital Hospice has provided compassionate medical, emotional, spiritual and practical care to families and their loved ones facing serious progressive illness.

As the leading provider of palliative and hospice care throughout the Washington DC metropolitan region, Capital Hospice serves the needs of an increasing number of patients, averaging nearly 900 patients per day in 2009.

Building on our industry-leading services, and with careful analysis of current and future community needs, Capital Hospice now embarks on an ambitious expansion and enhancement project to build the Adler Center for Caring on the Van Metre Campus for Hospice Care. This strategic plan significantly improves our ability to address the health challenges of those in our service area which includes Loudoun County, Prince William County, Fauquier County, Stafford County, Fairfax County, Arlington County, Washington DC and Prince George's County, MD.

The construction of the new inpatient care center will enable us to better serve the needs of those located in Northern Virginia and will:

- Establish the first dedicated inpatient hospice and palliative care facility in Loudoun County, VA
- Feature 21 private rooms in a home-like setting for inpatient hospice and respite care
- Deliver patient care with the latest treatment, monitoring, and care-support technologies
- Include a separate suite for palliative care with related medical intervention capabilities
- Reduce operating expenses by consolidating several in-home care teams into one regional facility
- Serve as a community resource with meeting space for community groups

The current construction cost estimate for this critically needed facility is approximately \$15,000,000. And now we need your help to make this project a reality. Your support will touch countless lives including the aged, the very young, and the families who rely on hospice care for the emotional and spiritual strength to help them through their time of need.

Your generous gift will provide essential financial assistance to bring improved hospice and palliative care to a grateful community. Please join others who have pledged their support. Thank you for making it all possible!

Sincerely,

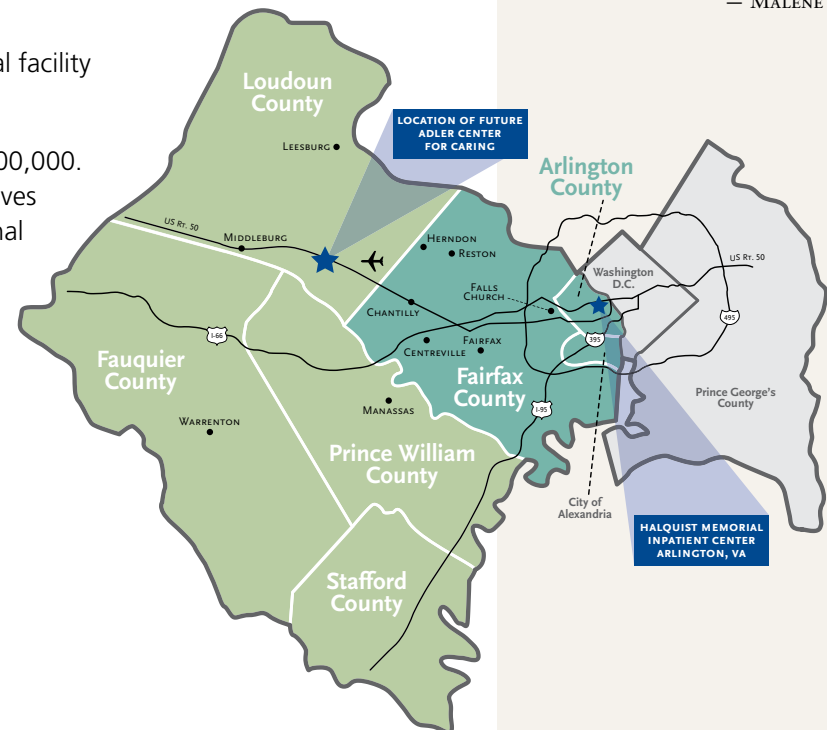


Malene S. Davis, MBA, MSN, RN, CHPN
President and Chief Executive Officer



“Your generous gift will provide essential financial assistance to bring improved hospice and palliative care to a grateful community.”

— MALENE DAVIS



The center will also be home to our Palliative Care Clinic, which will provide pain and symptom management for patients who are not hospice eligible.



Len and Dale Adler

THE ADLER CENTER FOR CARING

The plans for this critically needed inpatient hospice care center are complete and the generous gift of four acres of land by the Van Metre Companies along Route 50 in Loudoun County will be the home for the facility.

This 21-bed, modern inpatient hospice care center will provide a place for patient-focused programs in a home-like setting with the latest in treatment, monitoring, and care-support technologies. It will also help alleviate the burden on the Halquist Memorial Inpatient Center in Arlington, VA which operates at full capacity with a waiting list.

In addition to providing industry-leading hospice and palliative care, the new facility will include meeting space and clinical offices for home care teams serving Loudoun, Prince William, Stafford, and Fauquier Counties.

Expanding our facilities is crucial to continuing to provide the highest quality hospice care to the community. Most patients receive Capital Hospice care wherever they call home, so they

can be with loved ones amid familiar surroundings. Occasionally though, a short-term stay at an inpatient hospice care facility is required when:

- Progression of an illness becomes more than a caregiver can provide at home
- A change in medication or dosage requires close monitoring
- Family business or emergency reduces the caregiver's availability
- The caregiver needs a respite to prevent his or her own exhaustion
- The patient has special needs and has acute care requirements

Any of these circumstances require a place where the patient can receive appropriate hospice care. This new facility will fulfill these vital patient needs.

“We have been involved with Capital Hospice for many years and have long admired the work they do in our community. When we learned of the critical need for a new inpatient care facility, we knew we wanted to be part of the solution.”

— LEN AND DALE ADLER

An architectural rendering of the proposed Adler Center for Caring.



CAPITAL HOSPICE INPATIENT CENTER PROJECT FAQs

What is the Project?

A new 48,000 square foot, 21-bed, inpatient hospice care facility with a Palliative Care Clinic, meeting space, and clinical offices for hospice care teams.

Where will it be located?

The Adler Center for Caring on the Van Metre Campus for Hospice Care will be located in Loudoun County at Route 50 and Gum Springs Road, within the Van Metre Stone Ridge Community.

Why are you building it there?

The location is ideal because it is convenient to Loudoun, Fauquier, western Fairfax, Stafford, and Prince William counties, and is located in an area identified by Capital Hospice as the fastest growing region of the northern Virginia service area. The generous land gift from the Van Metre Companies made it an obvious choice.

How far along are the plans?

The architectural plans are complete and Capital Hospice is currently applying for permits from Loudoun County. Construction is expected to take approximately a year to complete.

Why does the community need this new center?

- Demand for hospice care is increasing and will continue to grow as shown by the Capital Hospice patient increase of 40% over the past 3 years.
- There is a critical shortage of inpatient hospice beds for a community of our size.

- The Arlington-based, 15-bed Halquist Memorial Inpatient Center operates at or near capacity throughout the year and is inconvenient or inaccessible to many.

What are some of the benefits of this project?

- Provide more options for those in need of specialized inpatient hospice care
- Reduce stress on patients and families by eliminating the need to travel to Arlington for care
- Enable Capital Hospice to better serve the community by increasing its organizational capacity
- Relieve the burden on local hospitals which lack proper hospice care facilities
- Reduce healthcare costs as inpatient hospice beds are the most cost-effective way to deliver care
- Provide a home for our palliative care practice to deliver symptom management for non-hospice patients

How much will the project cost?

The current construction estimate is approximately \$15,000,000, including contingencies.

How can I help?

Please make your tax deductible contribution or pledge to the campaign, today!

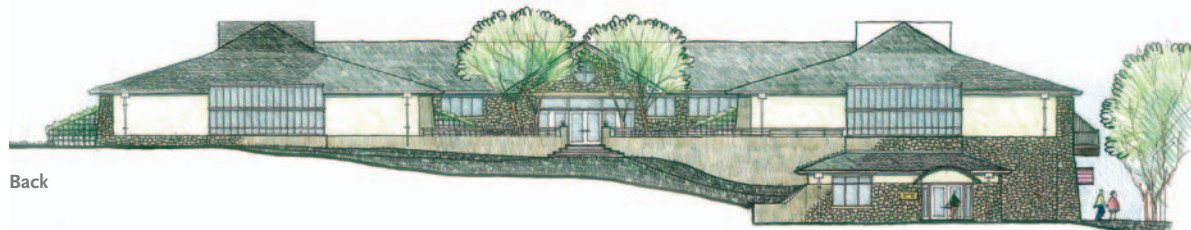
Contact

Patti DeBuck, Vice President of Philanthropy
703.531.6227, philanthropy@capitalhospice.org

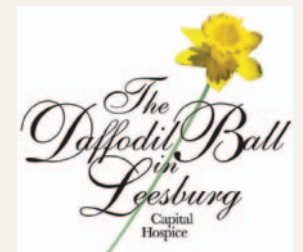


“Through our volunteer work with Capital Hospice, we know of many heartbreaking stories of patients desperately in need of inpatient care who had to do without because there was no where for them to go. A community such as ours must have world-class hospice care and the new Adler Center for Caring will deliver it.”

— JANET & JACK FOX, MD
Founders, Daffodil Ball



Back





“There are a few organizations that are close to our hearts because we admire the work that they do and the lives they touch. Capital Hospice is at the top of that list because of the important role they play in meeting the needs of families during the most trying of times in their lives.”

— GLORIA & SYDNEY ALBRITTAİN
Honorary Chairs

THE VISION, THE NEED

The Adler Center for Caring on the Van Metre Campus for Hospice Care in Loudoun County will provide more options for patients in need of inpatient hospice care. It will also lessen the stress on patients and their families created by traveling from Loudoun, Prince William, Fauquier, Stafford, and western Fairfax counties to the Halquist Memorial Inpatient Center in Arlington, VA.

Upon completion of the creatively designed inpatient hospice care center, Capital Hospice will greatly increase its organizational capability to meet the growing needs of hundreds of thousands of area residents and their families.

Advanced technologies and resources will allow Capital Hospice to partner with other regional hospices that do not have similar facilities. This interaction will improve the quality of care for all persons receiving hospice services. Additionally, the new center will serve as a training site for future hospice physicians and is expected to be a national model for excellence in hospice care.

Prior to this major fund raising initiative, Capital Hospice completed the necessary research and embarked upon a comprehensive feasibility and planning study. The plan to build this facility was validated by the study participants who concluded that Capital Hospice has both the reputation and the support throughout the community to make this campaign a success.

Preliminary estimates indicate that this project will cost \$15,000,000. Initially, its construction is planned to be financed through long-term debt (such as industrial revenue bonds), Board-designated funds which can be accessed as needed, and generous gifts from Capital Hospice benefactors above and beyond their annual level of support.

The Adler Center for Caring on the Van Metre Campus for Hospice Care will become a reality with the combination of public commitment, effective leadership, and generous donors.

“**The need for inpatient care is acute in our community.** The creation of a state-of-the-art inpatient center in the western portion of our service region is **the first step in a multi-phase plan to provide a long-term solution** to the needs of our patients and their loved ones. Our Board of Trustees and Staff are fully committed to ensuring the completion of this project. As a nonprofit organization that never turns anyone away for the inability to pay, **philanthropy will be essential to making this project a reality.**”



— ELLEN GOITIA, *Chair, Board of Trustees*

A BLUEPRINT FOR COMPASSION

For more than 30 years, Capital Hospice has taken a life-affirming approach to hospice care. It has placed an emphasis on patient comfort, dignity, and support by providing the patient and their family the opportunity to live each day with purpose, meaning, and free from pain.



Through an interdisciplinary care team (that includes a physician, nurse, social worker, chaplain, certified hospice assistant, bereavement counselor and specially trained volunteers), Capital Hospice strives to provide physical, spiritual, and emotional support to patients, caregivers, and their loved ones.

In 1977, Hospice of Northern Virginia and Hospice Care of D.C. were founded independently, with the Hospice of Prince George's County established several years later in 1983. In 2000, these organizations combined to create Capital Hospice as we know it today.

From its inception, Capital Hospice promised to provide those facing life-limiting challenges throughout the Northern Virginia and Washington DC region with expert care and comfort, regardless of the nature of the illness, the presence of a caregiver, or the ability of the patient or their family to pay for the care. This mission of compassion guides our every step, every day.

Today, Capital Hospice is the largest nonprofit hospice organization in the greater Washington area. We serve more than 900 patients a day in Arlington, Fairfax, Fauquier, Loudoun, Prince William, Stafford, and Prince George's counties as well as the District of Columbia. We are dedicated to improving the care of those facing serious, progressive illness by providing direct support to the patient and their families, and through public education and public advocacy.

We believe that improved care can only come from a dedicated and educated staff of professional caregivers. To that end, Capital Hospice has more hospice and palliative board-certified doctors and nurses than any other hospice organization in the region. We provide grief and bereavement services for hospice families as well as for the community at large. We also offer crisis and continuous care, 24 hours a day, with direct telephone access to a nurse at any time, day or night.

The care from Capital Hospice also includes the services of Capital Palliative Care Consultants who provide pain and symptom management for those who do not qualify for hospice care services.



“Hospice is a special kind of multidimensional care designed to treat the patient, not the disease. Hospice isn't a place; it is a comprehensive program of compassionate care. Our goal is to provide the patient with comfort while relieving the burden on the caregiver. Capital Hospice care is about quality of life. Moreover, we provide treatment wherever home may be.”

— CAMERON MUIR, MD
*Executive Vice President,
Capital Hospice*



In any language, the saddest words are when the doctor says to the patient:

“There is nothing more that I can do. All the treatments available have been tried and they have all failed, and there is just nothing more that can be done...”

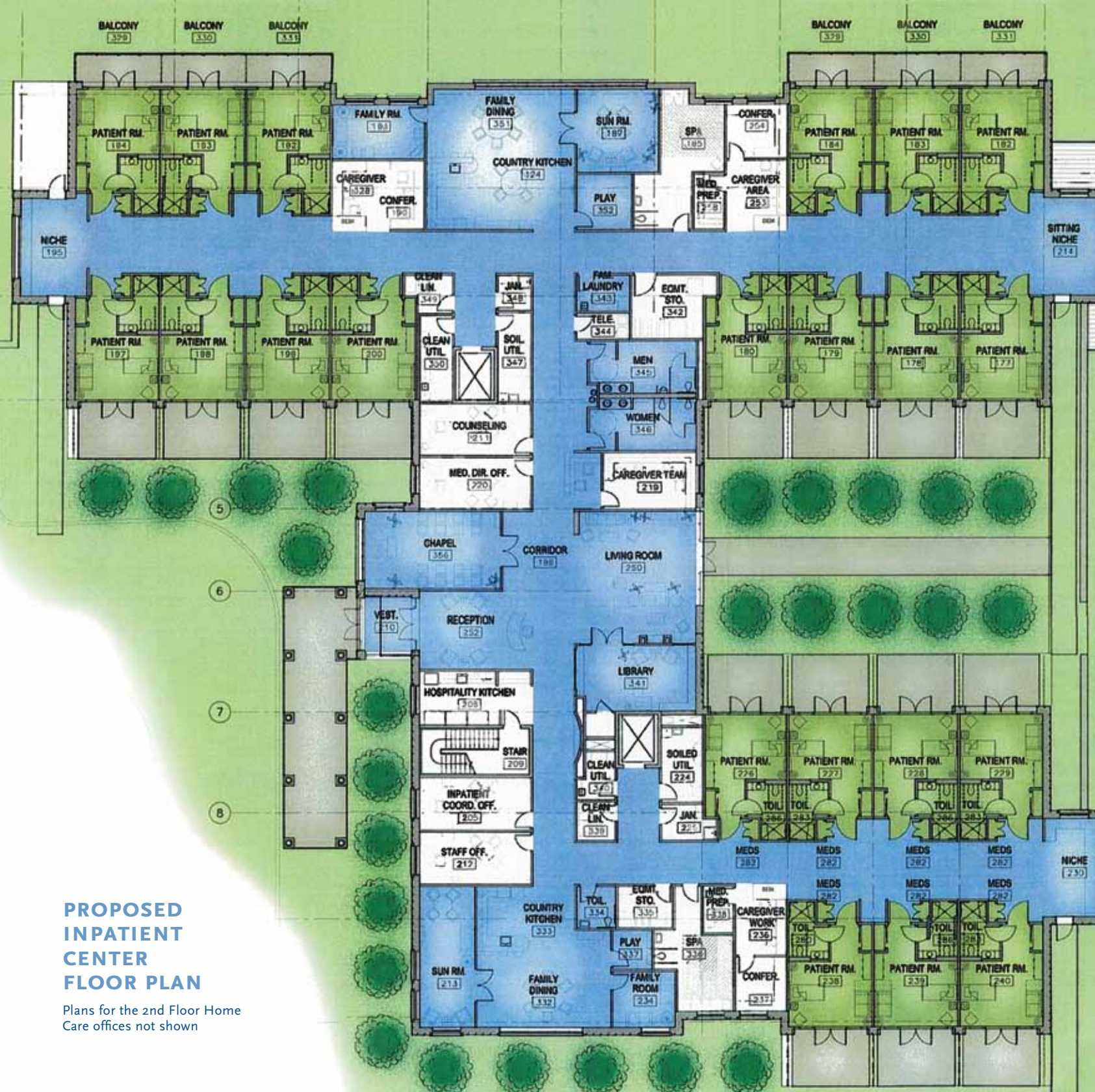
...But Sir William Osier, a great internist, has redefined good medicine as follows:

“**Good medicine cures sometimes, it palliates often, but it comforts always.**”

With this definition, no physician should ever say to a patient that there is nothing more that he can do. While there is nothing more that can be done to cure, there is no limit to what can be done to make the patient as comfortable as possible, and to provide him and the members of his family with the comfort and the support that they need at this stressful time.

In effect, this is what hospice care is. When cure of disease is no longer possible, the focus of the treatment should shift from curing to caring. The physician can now say to the patient: **“I can no longer cure you, but I will continue to care for you.”**

— JOSEFINA B. MAGNO, MD, (2007) *Hospice in America*, Lincoln, NE: iUniverse



**PROPOSED
INPATIENT
CENTER
FLOOR PLAN**

Plans for the 2nd Floor Home Care offices not shown

The Adler Center for Caring on the Van Metre Campus for Hospice Care will become a reality with the combination of public commitment, effective leadership, and generous donors.

“When our one-year old son was diagnosed with a terminal illness, we did not know where to turn until we asked Capital Hospice for help and support. Their physicians and staff were wonderful in the 31 days he spent in the Halquist Center in Arlington. Unfortunately, this was more than a one-hour drive each way from our home in Purcellville. At the time, there were no other options. The construction of the Adler Center for Caring in Loudoun County will ensure that other families will not have to endure the same challenges and will allow them to spend more quality time with their loved ones.”

— LINDA CASSELL
Purcellville, VA



*In memory of Christopher G. Cassell,
age 12 months*

BOARD OF TRUSTEES AND EXECUTIVE LEADERSHIP

Board of Trustees

Ellen Goitia
Chair

Donald E. Strehle
Vice Chair

Frank Gomes
Treasurer

Malene S. Davis, MBA, MSN, RN, CHPN
President & CEO

Christine Candio, RN, FACHE

Heather Burnett Gold

Laura D. Inniss

Sandra Mabry

Paul Manca, Esq.

William (Jim) McAuley, Ph.D.

L. Reuven Pasternak, MD, MPH, MBA

Robin Portman

Scott Royal

Randy Segal, Esq.

Capital Hospice Executive Team

Malene S. Davis
President & CEO

David A. Schwind
Executive Vice President,
Administration, Chief Financial Officer

Linda W. Maurano, MSN, BSN
Executive Vice President, Clinical Services

J. Cameron Muir, MD
Executive Vice President, Quality and Access

Patricia K. DeBuck
Vice President, Philanthropy

Please join us in our vision to build the Adler Center for Caring on the Van Metre Campus for Hospice Care. Your gift will provide families with a new choice — a comprehensive hospice care inpatient center where loved ones can be nurtured physically, emotionally, and spiritually.

BUILDING HOPE

For more information about the Community Campaign to Build the Adler Center for Caring on the Van Metre Campus for Hospice Care, please contact the Capital Hospice Philanthropy office at 703.531.6227.

Headquarters:

Capital Hospice

2900 Telestar Ct.
Falls Church, VA 22042
703.538.2065 Office
703.538.2073 Fax

philanthropy@capitalhospice.org

www.capitalhospice.org

Leesburg, VA

209 Gibson Street, NW
Suite 202
Leesburg, VA 20176
703.777.7866 Office

Manassas, VA

10530 Linden Lake Plaza
Suite 200
Manassas, VA 20109
703.392.6707 Office

Alexandria, VA

5568 General Washington Drive
Suite A215
Alexandria, VA 22312
703.333.6960 Office

Washington, D.C.

4401 Connecticut Avenue, NW
Suite 700
Washington, D.C. 20008
202.244.8300 Office

Largo, MD

9200 Basil Court
Suite 200
Largo, MD 20774
301.883.0866 Office

Arlington, VA

Halquist Memorial
Inpatient Center
4715 North 15th Street
Arlington, VA 22205
703.525.7070 Office





Capital Hospice | 2900 Telestar Court | Falls Church, VA 22042 | 703.538.2065 Office | 703.538.2073 Fax
philanthropy@capitalhospice.org | www.capitalhospice.org